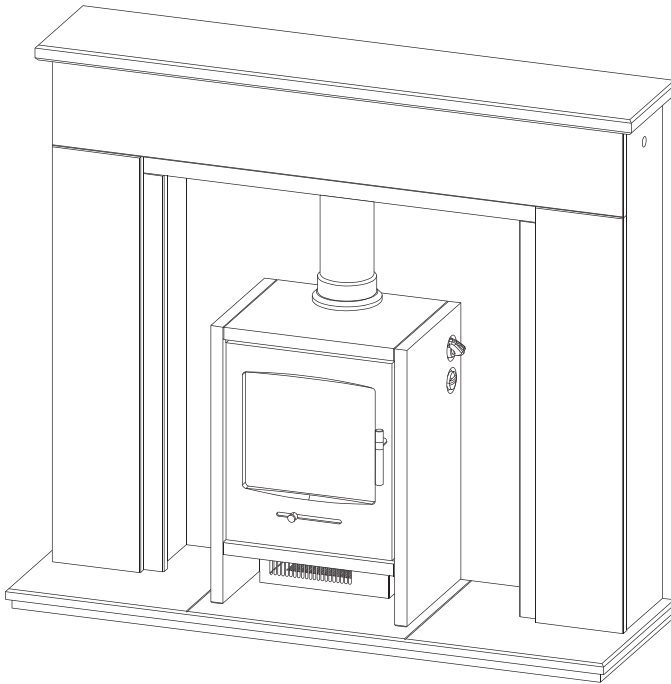


MARBLE ELECTRIC STOVE SUITE

Installation Guide



* Note - Image for illustrative purposes
Surround and stove design will vary depending on model chosen.

Please read through the use & care manual provided with this product first.

www.firedupcorporation.com/manual

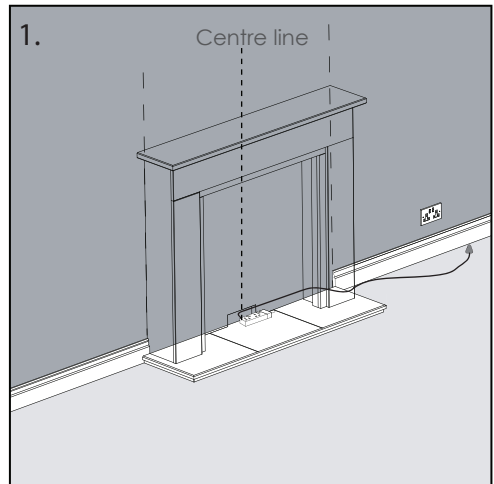
PARTS SUPPLIED

- Surround
- Shelf
- Header Return
- Slate Chamber - Back panel
- Fixing Kit

TOOLS & PARTS REQUIRED

- Pencil/Pen
- Drill & 6mm Drill Bit
- 2 Gang Extension Lead (Recommended)
- Grab Adhesive
- Silicone / Caulk

Installation

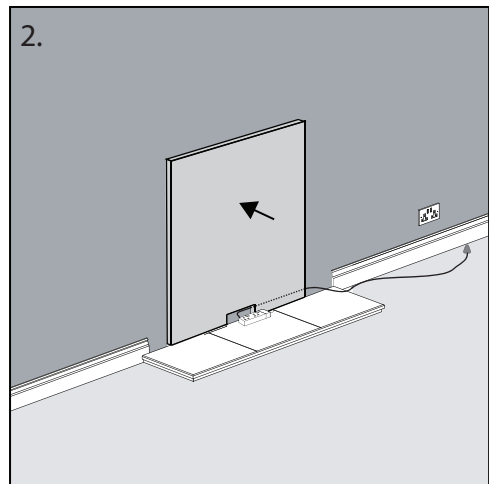


1.

Centre line

Make the relevant cuts to the skirting board to accommodate the width of the fireplace body.

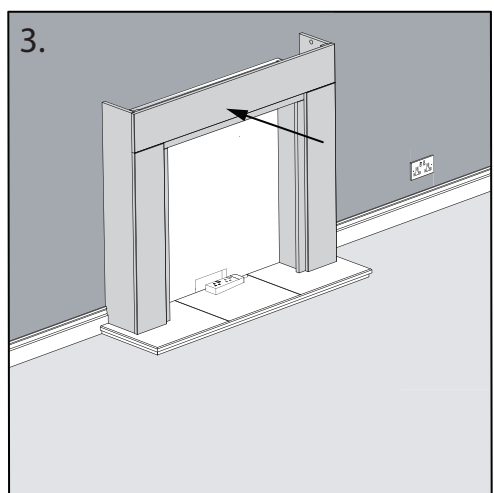
Position the hearth & feed a double socket extension lead to the centre of the hearth.



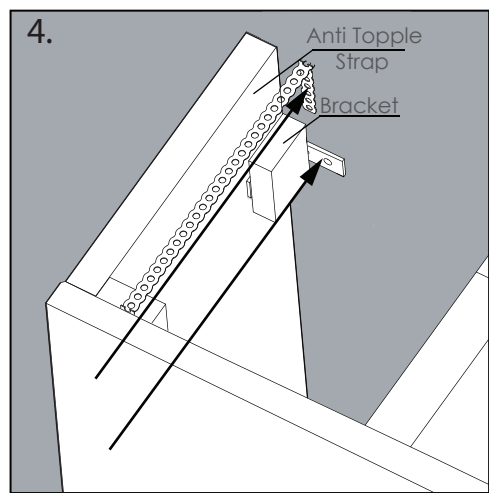
2.

Using grab adhesive, adhere the back panel flat to the wall.

Ensure the extension socket is fed through the cut out of the back panel.



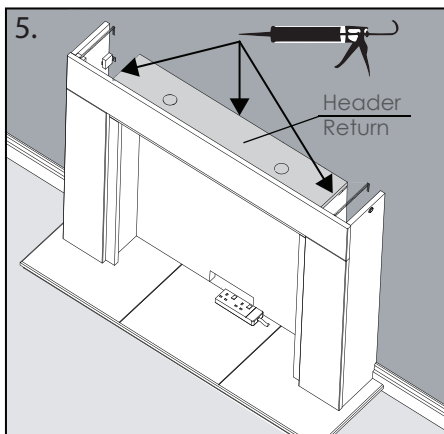
3.



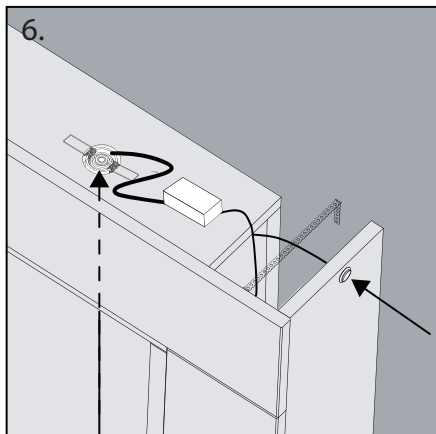
4.

Anti Topple Strap
Bracket

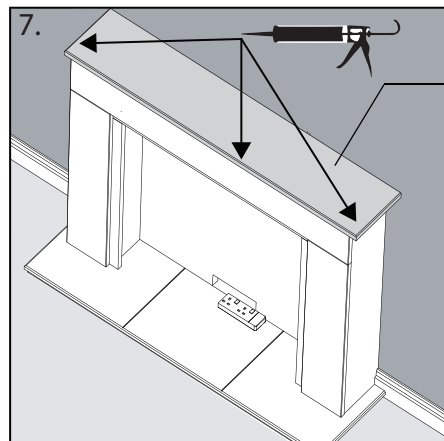
Position the fireplace body and fix to the wall using the anti-topple straps and brackets provided, as shown in Illustration 7.



5. Using 'pea sized' dabs of silicone, adhere the header return to the back panel & inner returns



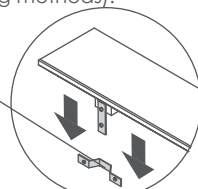
6. Insert the down lights and connect the switch to the right leg.



7. Using 'pea sized' dabs of silicone, adhere the underside of the shelf to the fireplace body.

Use fixing blocks to secure fixing brackets to the shelf (if supplied as separate parts - use appropriate fixing methods).

Secure stand-off bracket to the wall



Carefully lower shelf onto the fireplace body, ensuring fixing brackets sit in stand-off brackets.

